

RUBBISH CHUTES CLADDING & NETTING SECTION 04

RUBBISH CHUTES

CONTAINMENT SHEETING

DEBRIS NETTING

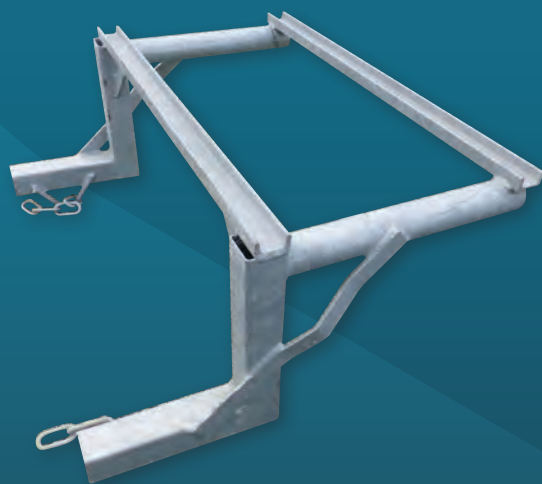
KWIKAZ CLIPS & DRIVER

KWIKAZ BUCKET C/W 500 CLIPS & DRIVER

KWIKAZ DRIVER

CABLE TIES

TOGGLE TIES



RUBBISH CHUTES, CLADDING & NETTING

RUBBISH CHUTES

MADE FROM TOUGH DURABLE PLASTIC

- **LIGHTWEIGHT** - Unlike some rubbish chutes, which, being made from inferior material can weigh over 15kg each, our sections weigh only 8kg.
- **STACKS EASILY** - AKM Rubbish Chute sections are 1100mm high and taper from 500mm to 400mm. This ensures flexibility and easy stacking - valuable space is saved.
- **EASILY ERECTED** - Either by hand or purpose designed winch systems our range of rubbish chutes are ready for a quick setup.

ITEM CODE	DESCRIPTION
RCTH	Top Hopper
RCSH	Chute Section
RCSE	Side Entry Chute
RCFF	Fixing Frame

FIXING FRAME



TOP HOPPER



CHUTE SECTION



SIDE ENTRY CHUTE



NZ 0800 000 448
sales@safesmartaccess.co.nz

 **SAFESMART**
ACCESS
Reaching new heights

RUBBISH CHUTES, CLADDING & NETTING

CONTAINMENT SHEETING

ITEM CODE	DESCRIPTION	SIZE
CP-15-245	Dust Sheeting Containment	2m x 45m
CP-15-345	Dust Sheeting Containment	3m x 45m
CP-15-445	Dust Sheeting Containment	4m x 45m
CP-25-245	HD Containment Sheeting	2m x 45m
CP-25-345	HD Containment Sheeting	3m x 45m
CP-25-445	HD Containment Sheeting	4m x 45m
CP-F20-245	Flame Retardant	2m x 45m
CP-F20-345	Flame Retardant	3m x 45m
CP-F20-445	Flame Retardant	4m x 45m



DEBRIS NETTING

ITEM CODE	DESCRIPTION	SIZE
5010001SWH	Debris Netting WHITE	2m x 50m
5010001SRD	Debris Netting RED	2m x 50m
5010001SBK	Debris Netting BLACK	2m x 50m
5010001SBL	Debris Netting BLUE	2m x 50m
5010001SGR	Debris Netting GREEN	2m x 50m
5010001SYW	Debris Netting YELLOW	2m x 50m

- Reusable alternative to shrink wrap, for all-weather applications
- Attach to scaffold with toggles ties, see pg 61



RUBBISH CHUTES, CLADDING & NETTING

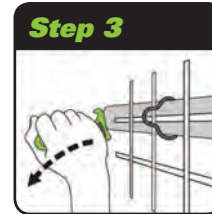
KWIKAZ CLIPS & DRIVER



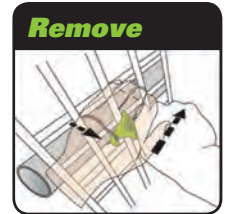
Insert the clip into the jaws on the front of the tool.



In a single action, strike the clip through the screening and around the pole.



Remove the tool, leaving the clip attached to the mesh and the pole.



To remove the clip, insert the hook into the loop of the clip, rest the bottom of the handle against the pole, and lever the clip off.

KWIKAZ BUCKET C/W 500 CLIPS & DRIVER



ITEM CODE	DESCRIPTION
KWK001	KwikAz Bucket

KWIKAZ DRIVER



ITEM CODE	DESCRIPTION
KWK002	KwikAz Driver

CABLE & TOGGLE TIES



CABLE TIES



TOGGLE TIES

ITEM CODE	DESCRIPTION
CF108	300mm x 4.8mm Maxpro Cable Ties/100
CF203	Elastic Fixing Ties Round Style Pkt/100

NZ 0800 000 448
sales@safesmartaccess.co.nz